

**SPECIFICATIONS FOR THE RECHARGEABLE VALVE REGULATED LEAD-ACID BATTERY
Model No. LC-X1275P**

1. Scope

These specifications pertain to Panasonic Storage Battery (Shenyang) Co.,Ltd.'s (PSBS'S) Rechargeable Valve Regulated Lead-Acid Battery, type LC-X1275P, hereafter referred to as the " battery" . This document only describes the performance of the battery. The price, delivery date and other matters should be dealt with in other mutual agreements.

2. Requirements

Voltage, capacity, mass and dimensions for this model are shown in Table1.

Table 1 requirements

Model	LC-X1275P
Nominal Voltage	12V
Rated Capacity at 20 hour-rate(Ah)	75
Mass(approx.)	24.0Kg
Dimensions	shown in the attached drawing

3. Structure

The battery consists mainly of positive plates, negative plates, separators, electrolyte, valves, a container and a cover. The electrolyte is absorbed in both positive/negative plates and separators.

4. Characteristics

The following characteristics are for the batteries, which are manufactured within 6 months, independently.

4.1 Capacity

If the battery is discharged at 18.75A to the end voltage of 10.5V per battery after a full charge, followed by standing of one hour at an ambient temperature of $25\pm 2^{\circ}\text{C}$, the discharge duration time should exceed 3 hours within the first 3 times of the charge and discharge cycles.

4.2 Shelf life characteristics

The duration time should be more than 80 minutes when the battery, which has been stored at an ambient temperature of $40\pm 2^{\circ}\text{C}$ for 4 months, then stored at an ambient temperature of $25\pm 2^{\circ}\text{C}$ for 24 hours and is then discharged at 18.75A to the end voltage of 10.5V per battery.

4.3 Trickle life

If the battery is fully charged with a constant voltage charger with the controlled voltage of $13.7\pm 0.10\text{V}$ at an ambient temperature of $25\pm 2^{\circ}\text{C}$, and every 3 months the battery is discharged at a constant current of 18.75A to 10.5V at an ambient temperature of $25\pm 2^{\circ}\text{C}$, the battery shall have a trickle life of over 3 years with a discharge duration of over 1.5 hours.

Note: the expected life of the battery shall decrease by one-half with each rise in temperature of 10°C . In particular, the life of the battery will shorten remarkably at about 40°C .

Therefore careful consideration must be taken not to use the battery at high temperature. Also, as mentioned in 4.3 above, the life of battery will vary depending on the charge/discharge conditions. For example, a non-flat current may shorten the life of the battery. Thus if special charge and/or discharge methods not described in this specification will be used, please confirm the battery characteristics with the actual application equipment before designing the charger.

As the period of use of VRLA battery becomes longer, the run time of the battery gradually becomes shortened. While the battery reaches the end of life with the shortened run time, such phenomena as gradual decrease of electrolyte and corrosion of the positive grid occur inside of the battery. If the battery of this condition continues to be used, it may suffer from thermal runaway (a vicious circle of increasing charge current and rising temperature) and electrolyte leakage as its capacity reaches 0. We strongly recommend taking proper preventive measures such as replacing batteries before any of these phenomena are found. In addition, if the case is made of metal, please be sure that the battery is insulated against its metal case with acid-and heat-resistant insulating material so that the battery can not touch the metal case directly. If the battery continues to be used without proper replacement, or if it is not insulated properly, it may generate fire. In case you can not replace batteries for some serious reason, please take some other preventive actions such as stopping charging. Please see 'Recommended timing for battery replacement for backup applications' for more detailed information.

4.4 Vibration Resistance Characteristics

Vibration resistance characteristics are tested such that a fully charged battery, being in a right side up position, is subjected to vibrations under the conditions given below. The battery is then checked visually for damage such as deformation or leakage of electrolyte, and checked electronically for existence of a short circuit or the terminal voltage being lower than the nominal voltage.

(1) Direction of vibration	Vertical
(2) Peak to peak Amplitude	4 mm
(3) Vibration Frequency	16.7Hz
(4) Duration of Vibration	Continuously for 1 hour
(5) Ambient temperature	25±2°C

Note: The battery being tested must be firmly fixed on the vibration board.

5. Usage Conditions

5.1 Discharge

Discharge current range	3.75A to 225A
Temperature range	-15°C to 50°C
Recommended cut-off voltage	Shown in Table 2

Table 2 Recommended cut-off Voltage

Discharge Current	Recommended Cut-off Voltage
Below 0.2CA(15.0A)	10.5V
0.2CA to 0.5CA(15.0A to 37.5A)	10.2V
0.5CA to 1.0CA(37.5A to 75.0A)	9.90V
1.0CA to 2.0CA(75.0A to 150.0A)	9.30V
2.0CA to 3.0CA(150.0A to 225.0A)	8.70V

Do not allow the batteries to discharge below the recommended cut-off voltage.

5.2 Charge

Current limited, constant voltage charge

Initial charge current for trickle use	less than 11.25A
Temperature range	0°C to 40°C
Charge voltage	shown in Table 3

Table 3 Charge Voltage

Ambient Temperature	Charge Voltage(a)	Trickle Type
0°C	14.00 to 14.20V	
25°C	13.60 to 13.80V	
40°C	13.30 to 13.50V	

Notes:

- Charge voltage refers to the voltage remaining at the end of charge.
- When the initial charging current is bigger than 11.25A, please consult us.

5.3 Ambient Temperature Range of Storage

The ambient temperature range of storage shall be -15 to 40°C. But for the short-time (about 0.5month) storage, temperature range shall be -40 to 60°C. Also, for the long-time (about 12 months) storage, temperature range is desirably shall be -15 to 25°C.

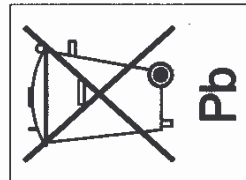
6. Limited Warranty

The following limitations apply to PSBS'S warranty:

- The battery is covered by warranty for a period of 1 year from the date of delivery from PSBS if defective materials or production mistakes originating from PSBS are the cause of any battery problem.
- PSBS will repair or replace batteries which are not conforming to the specification while PSBS is not responsible for the charges of recycle of the nonconforming batteries and installation of new batteries.
- The warranty does not apply if the problem has been caused by one of the following:
 - The battery has been used for purposes not specified by PSBS; or
 - The battery has been modified in any way.
- If the cause of the problem is not clear, PSBS reserves the right to investigate the actual application in which the battery was subjected.

- Please keep the next " Precautions in handling the Rechargeable Valve Regulated Lead-Acid Batteries" , to get full performances and operate them safety.
- Making design especially recycle symbol will be charged by individual country recycle circumstances such as law and/or voluntary. If you intend to export this battery another country, please consult Panasonic sales person.

Commercial Tolerance	Sym. Date	Revision	Signed	Checked

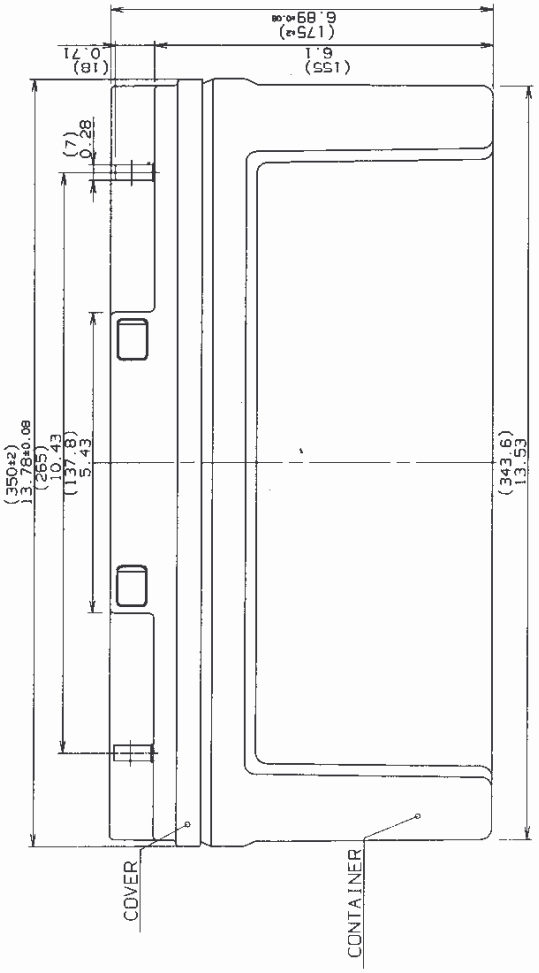
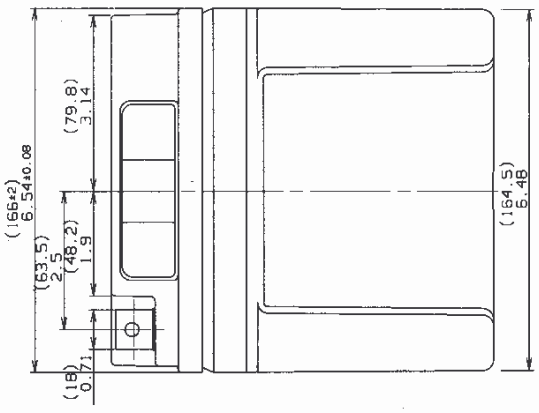
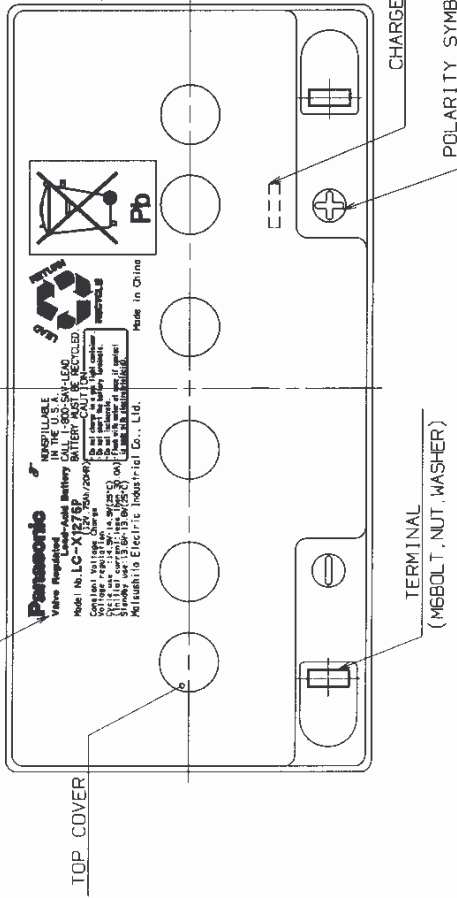


Panasonic
Valve Regulated
Lead-Acid Battery
Model No. LC-X1275P
(12V, 75Ah/20HR)

NONSPILLABLE
IN THE U.S.A.
CALL 1-800-SAV-LEAD
BATTERY MUST BE RECYCLED.
CAUTION

Do not charge in a gas-tight container.
Do not short the battery terminals.
Do not incinerate.
Flush with water of once if contact
is made with electrolyte/acid.

Made in China




Sym.	Item or Code No.	Material & Size	qt.	Process	Remark
	OUTWARD DRAWING	ABS			
Scale	Designed	Drawn	Traced	Checked	Approved
1:1	Jing	Jing			C. Bai
	Jun 27 '05	Jun 27 '05	Jun 27 '05	Jun 27 '05	Jun 27 '05
Name		LC-X1275P			
No.		MSX1275P-E			
OUTWARD DRAWING					

Note) Attach a set of bolt, nut and washer. (M6size)

Commercial Tolerance	Sym. Date	Revision	Signed	Checked
△				

FRAGILE

Stamp (Four Faces)
(Color:Black)



Panasonic®


Valve Regulated Lead-Acid Battery

LC-X1275P 25 kg

Made in China

Matsushita Electric Industrial Co., Ltd.

Charged Date Stamp
(Color:Red) (One Side)



Panasonic®

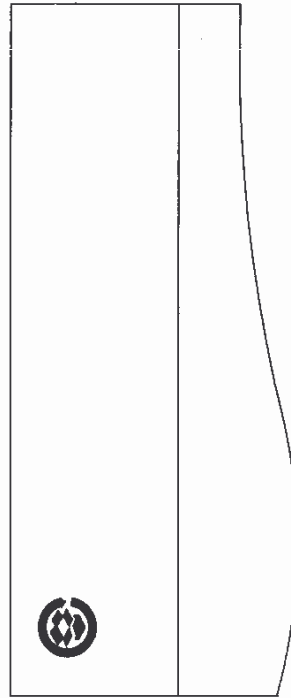
Valve Regulated Lead-Acid Battery

LC-X1275P 25 kg

Made in China

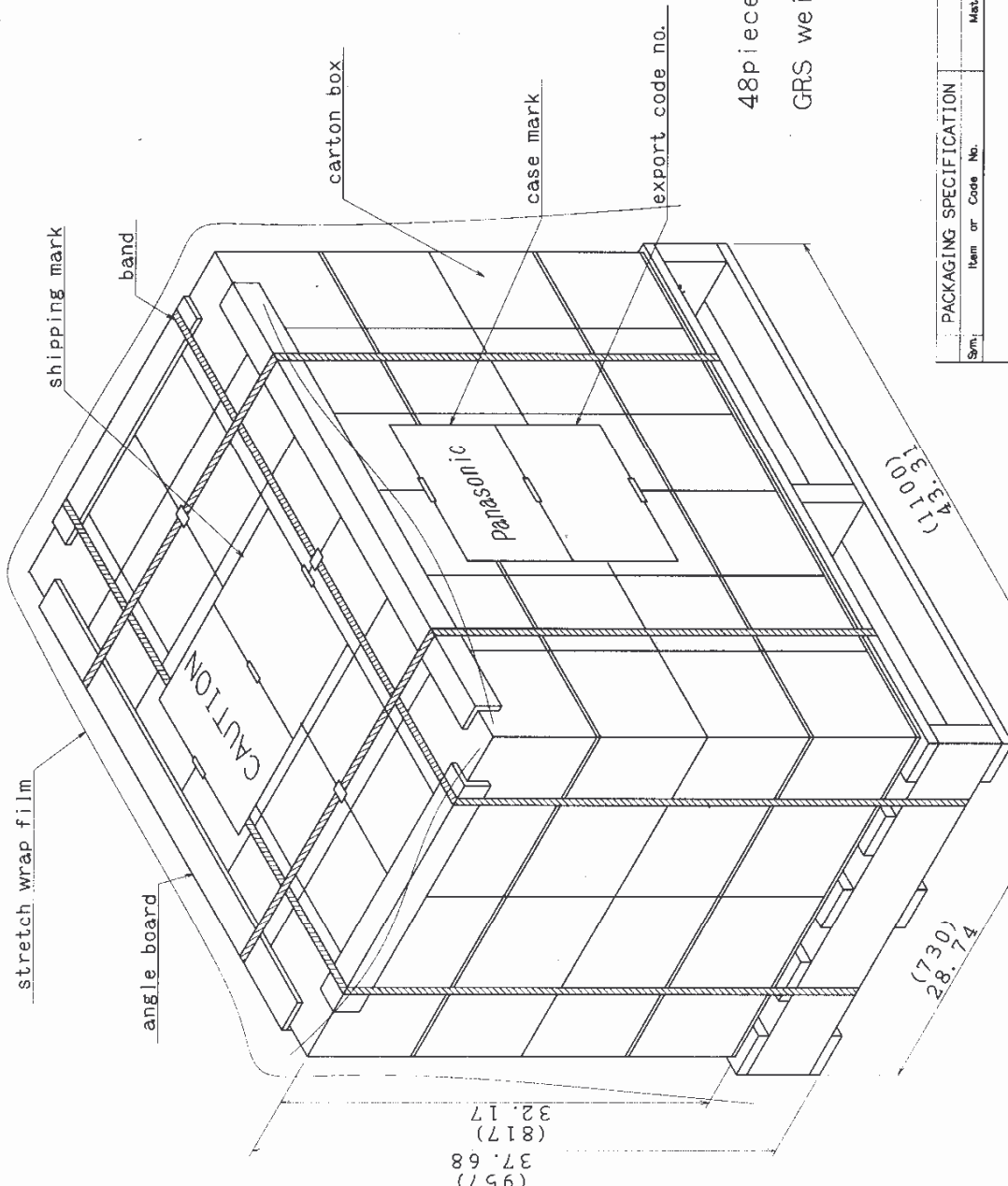
NONSPILLABLE

1pc



Qty	1/1	Material & Size	LC-X1275P
Item or Code No.	1/1	Name	OUTER CARTON
Scale	Designed	Checked	Approved
Hyoyajie	Hyoyajie	C. Bai	
Jun-27-05	Jun-27-05	Jun-27-05	Jun-27-05
No.	CR1X1275P-E		

Commercial Tolerance	Sym. Date	Revision	Signed	Checked



48 pieces (48 carton boxes)
 (1 pc / carton box)
 GRS weight: 1206 kg

PACKAGING SPECIFICATION		Material & Size	qtL	Process	Remark
Sm:	Item or Code No.				
			LC-X1275		
PACKAGING SPECIFICATION		Name	PACKAGING SPECIFICATION		
Scale	Designed	Drawn	Checked	Approved	No.
~	Huvalie	Huvalie	C-Bai	Ida	PPX1275B-E
	JUN 27 05	JUN 27 05	JUN 27 05	JUN 27 05	JUN 27 05